

# HISTOCORE SPECTRA WORKSTATION

## Time Matters, Trust in Every Slide

Automated staining and glass coverslipping workstation delivers immediately diagnosable slides enabling the fastest turnaround time to pathologists.



For In vitro diagnostic use.

Advancing Cancer Diagnostics  
Improving Lives

**Leica**  
BIO SYSTEMS

# CONSISTENT RESULTS AND REDUCTION IN ERRORS

The HistoCore SPECTRA Workstation is the first and only workstation with dual glass coverslip lines, enabling the highest throughput of up to 570 dried slides per hour, to meet the most demanding turnaround times.



Easy and safe operation with intuitive user interface and autostart protocol technology.



Unique dual robotic arms for faster processing.



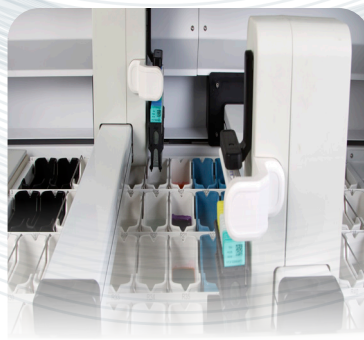
Reduce hands-on time and errors with the proprietary fill level scan and broken-glass detector technology.



Ready-to-use consumables provide fast and easy exchanges to reduce potential errors.



Reduce reagent consumption and effort with RFID and single slide counter.



The unique dual-robotic arm technology enables increased efficiency by 20% compared to other market-leading platforms when processing H&E and special stains.



The first and only workstation in the market with dual glass coverslip lines enabling the highest throughput of up to 570 dried slides per hour.



# INCREASED THROUGHPUT AND FLEXIBILITY



Meet workload demands with the highest glass coverslipper throughput in the market.



**5 MINS**  
SLIDE DRY TIME

Faster results allow for a much quicker diagnosis.



State-of-the-art staining and coverslipping quality helps reduce corrective actions, leading to decreased labor costs.



Keep your lab safe – sensor controlled continuous air extraction with external exhaust connection.

Maintain high throughput with the flexibility to process special stains and H&E stains simultaneously.



## DIAGNOSTIC CONFIDENCE

Quality-consistent results from slide 1 to 1600 using Leica Biosystems validated protocols and specifically designed consumables. Ready-to-use HistoCore SPECTRA S1-800, S2-800, and S3-800 Staining System for low-volume laboratories delivers consistency from slide 1 to 800.



Exceptional staining with Leica Biosystems validated stains and protocols.



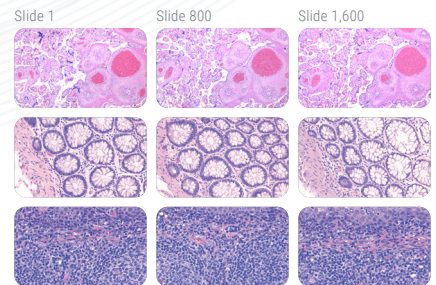
Market leading drying time provides faster delivery of slides.



Unmatched glass slide quality results in increased diagnostic efficiency.



Flexibility to choose between light, moderate and dark intensity staining systems.



Proven consistency from slide 1 to 1600.



#### HistoCore SPECTRA ST – SPECIFICATIONS

Instrument dimensions, hood closed	135.4 x 78.5 x 61.5 cm (53.3 x 30.9 x 24.2 in) (W x D x H)
Instrument dimensions, hood open	135.4 x 78.5 x 106 cm (53.3 x 30.9 x 41.3 in)
Weight	165 kg (365 lbs) (empty w/o reagents and accessories)
Weight with reagents	Approx. 215 kg (474 lbs)
Throughput	Up to 360 H&E slides per hour
Capacity of slide rack	30 (5 slide rack for special stains)
Reagent cuvette stations	36
Cuvette volume	380 mL
Water flow cuvette stations	6
Stations in input and output drawer	5 each, continuous loading possible with max. 150 slides
Drying oven stations	6
Certifications	CE, c-CSA-us
Nominal supply voltages	100 to 240 V

#### HistoCore SPECTRA CV – SPECIFICATIONS

Instrument dimensions, hood closed	69 x 78.5 x 61.5 cm (27.2 x 30.9 x 24.2 in) (W x D x H)
Instrument dimensions, hood open	69 x 78.5 x 106 cm (27.2 x 30.9 x 41.3 in)
Weight	115 kg (254 lbs) (empty w/o reagents and accessories)
Throughput	Up to 570 slides per hour
Usable specimen slides	In accordance with DIN ISO 8037/1 (76 mm x 26 mm)
Coverslip	HistoCore SPECTRA CV Coverglass
Coverslip quantity	300 coverslips per magazine
Coverslip size	24 mm x 50 mm
Mounting media	HistoCore SPECTRA CV X1, Xylene based
Specimen slide holders	30 specimen slides
Nominal supply voltages	100 to 240 V AC +10%
Special Cytology Settings	Yes

#### HistoCore SPECTRA H&E STAINING SYSTEMS

Staining intensity	S1 (light to moderate) S2 (moderate to dark) S3 (dark hematoxylin, bright eosin)
Capacity	800 and 1600 slides
On-stainer expiration	7 days
Staining system components	SPECTRA Hemalast    SPECTRA Hematoxylin SPECTRA Differentiator    SPECTRA Bluig SPECTRA Eosin
Staining component volume	380 ml/bottle

LEICA BIOSYSTEMS IS AN INTERNATIONAL COMPANY WITH A STRONG NETWORK OF WORLDWIDE CUSTOMER SERVICES  
For detailed contact information on your nearest sales office or distributor please visit our website: [LeicaBiosystems.com](http://LeicaBiosystems.com)