

Advancing Cancer Diagnostics
Improving Lives

Leica
BIO SYSTEMS

BOND-PRIME

IHC & ISH Staining System
High-productivity through Speed, Quality, and
Universal Access



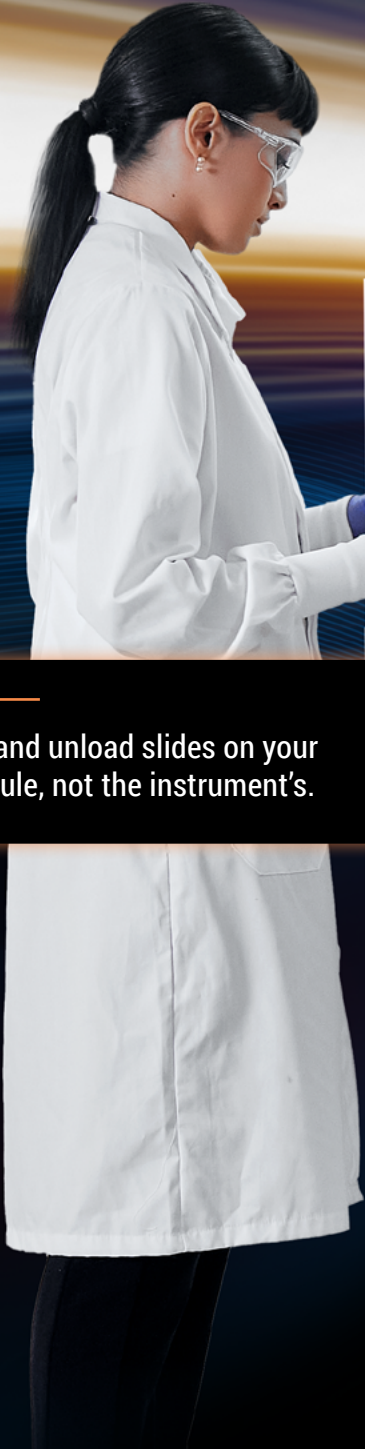
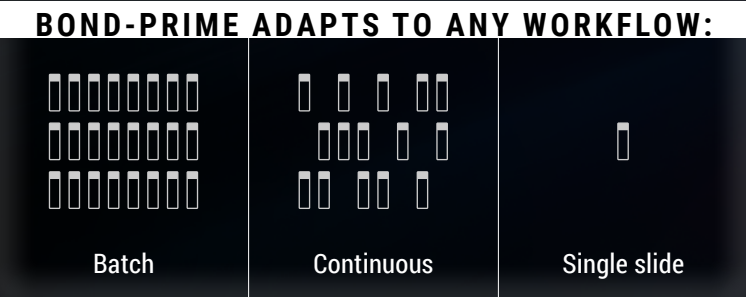
T R A N S C E N D E X P E C T A T I O N S

TRANSCEND EXPECTATIONS

The BOND-PRIME staining system featuring Universal Access, delivers high productivity and can seamlessly adapt to your incoming workflow demands effortlessly – whether it be batch, continuous, single slide/STAT cases, or a combination of all the above.

Coupled with the ability to produce high-quality, crisp, clear staining with an average IHC slide TAT of 95 minutes, the BOND-PRIME staining platform lets you transcend expectations for quality, timeliness, and diagnostic productivity.

Load and unload slides on your schedule, not the instrument's.





Active Reagent Control (ARC) Modules ensure consistent, reproducible, high-quality staining.

EXCELLENT QUALITY STAINING



DIAGNOSTIC PRODUCTIVITY

UNIVERSAL ACCESS
Powering Fully Adaptable Workflow

SPEED
Ave 95 Min IHC Slide TAT

Universal Access facilitates a fully adaptable workflow unleashing your full diagnostic productivity.

Advanced robotics drastically shorten the time from request to completed case.



Load any slide



in any combination



with any reagent



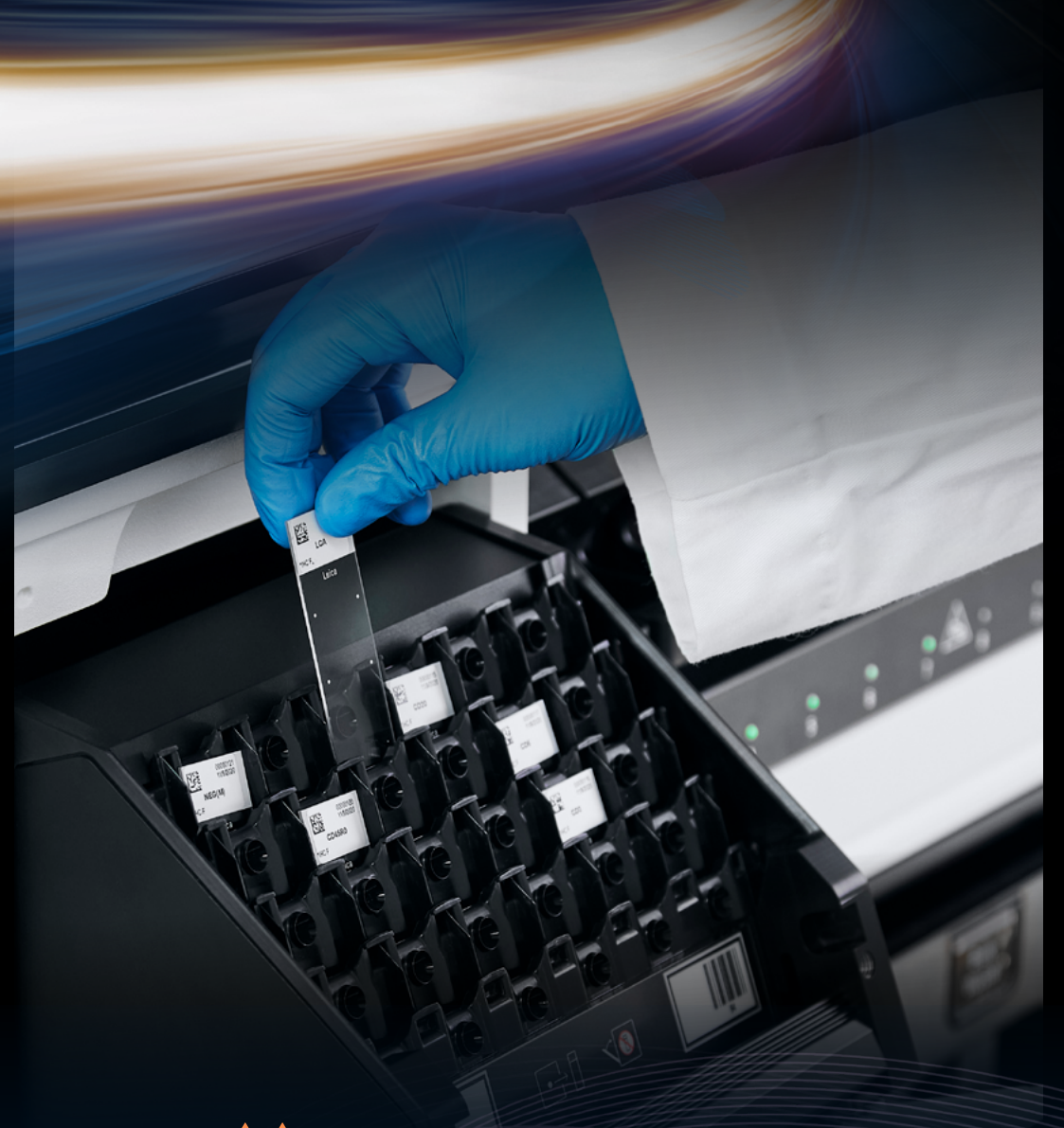
at any time



UNIVERSAL ACCESS

EXPERIENCE AUTOMATION, ELEVATED
WITH UNIVERSAL ACCESS

Achieve the pinnacle of productivity with the fast and adaptable BOND-PRIME staining platform. Universal Access seamlessly adapts and optimizes your workflow to stain slides as needed.



ANY SLIDE

**INDEPENDENT ACTIVE REAGENT CONTROL
(ARC) ARRAY**

Precisely engineered, individual staining chambers run any staining protocol at any time.



ANY COMBINATION

FULLY ADAPTABLE WORKFLOW

Continually adapts to incoming work. Load single slides, complete cases, full batches or any workflow to keep your slides processing.



ANY REAGENT

70 STAINING REAGENT CAPACITY

Ample reagent space means no delays to add antibodies and/or detection. Be ready to stain slides at all times, especially STAT slides.



ANY TIME

PRELOAD AND UNLOAD DRAWERS

48 slide walk-away capacity for continuous workflows. Load and unload slides on your schedule, not when the instrument demands.

UNIVERSAL ACCESS IN ACTION

ACHIEVE COMPLETE CONTROL OF YOUR DAILY WORKLOAD

Seamlessly adapt to incoming workflows – Batch, Continuous, Single Slide or STAT cases.

The uniquely flexible Preload/Unload Drawer system and the 70-container reagent capacity remove traditional constraints to slide processing and instrument utilization.

Unlike other stainers, there is no need to continually monitor individual slides and reagents on BOND-PRIME.



SLIDES IN PROCESSING

Advanced robotics mean rapid slide transit from drawer to processing.

48 slide walk-away capacity.

Unload slides when you are ready, without delaying new slides.

SLIDES IN THE PRELOAD DRAWER

Each time a slide moves it creates a slide vacancy, increasing staining capacity.



SLIDES IN THE UNLOAD DRAWER

Completed slides are stored in the hydrated Unload Drawer.



Processing Slides

Loaded Slides

Completed Slides

FULLY ADAPTABLE WORKFLOW RELEASES YOUR FULL DIAGNOSTIC PRODUCTIVITY

CRISP, CLEAR STAINS

EXCELLENT QUALITY, ACCELERATED

The BOND-PRIME staining platform features progressive automation that works in tandem with our premium reagents to produce crisp, clear stains with the details pathologists look for.

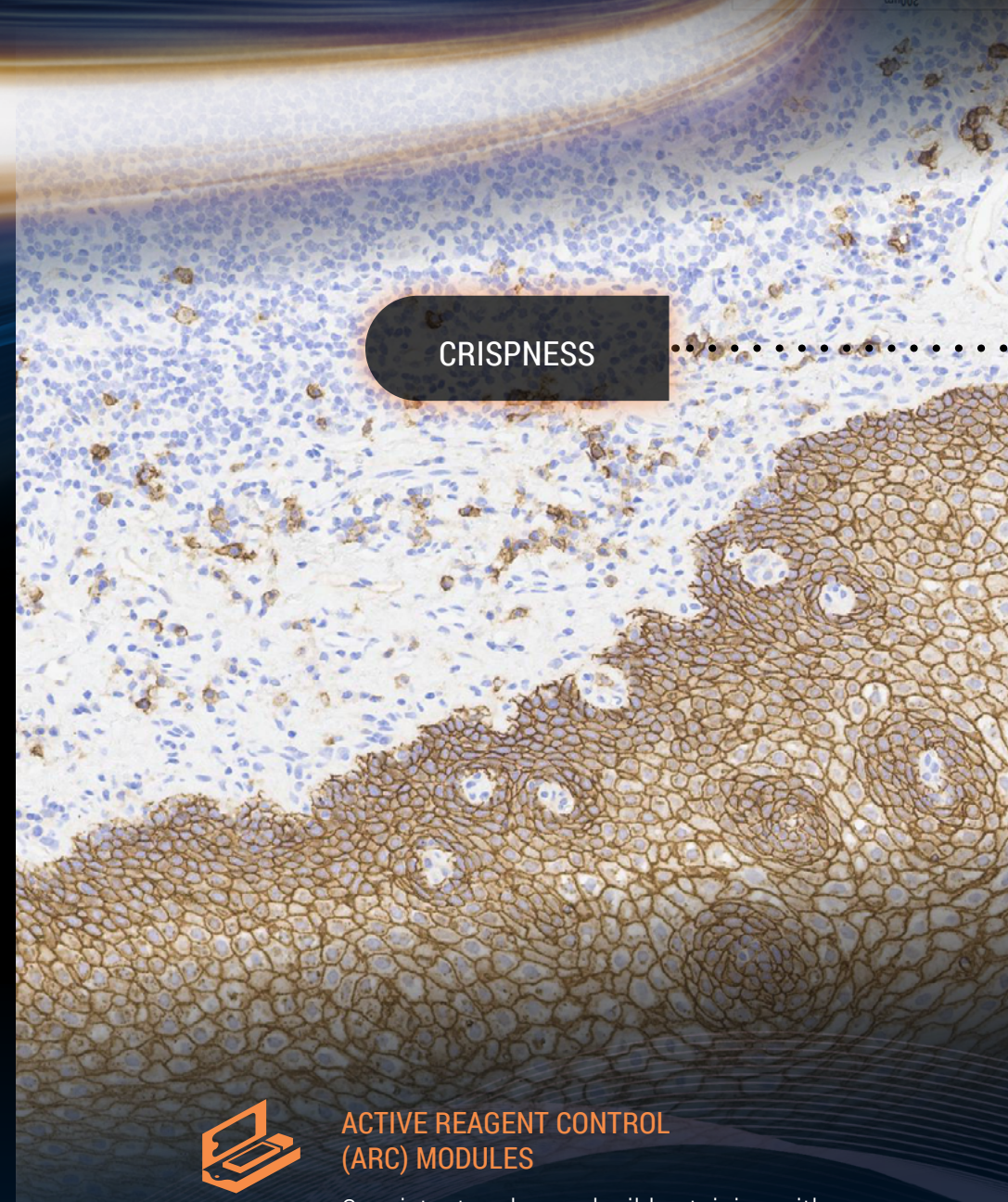


IMAGE GALLERY

Scan here to visit the BOND-PRIME
Staining Image Gallery

Staining performed on BOND-PRIME (left to right):

1. CD138 Plasma Cell Myeloma, skin epithelium
2. HMB45 Red AP Melanoma
3. CD23 Chronic Lymphocytic Leukemia

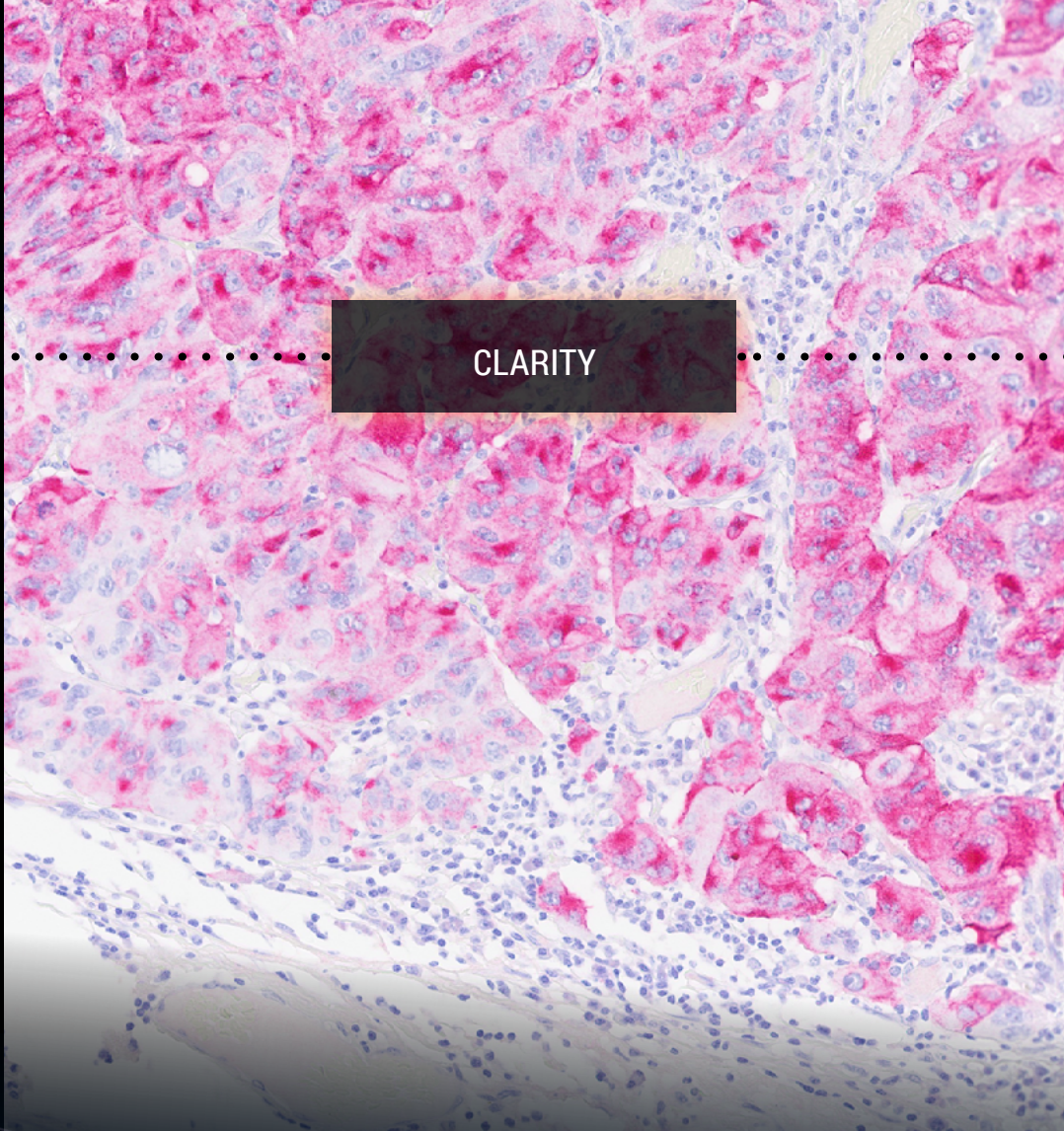


CRISPNESS

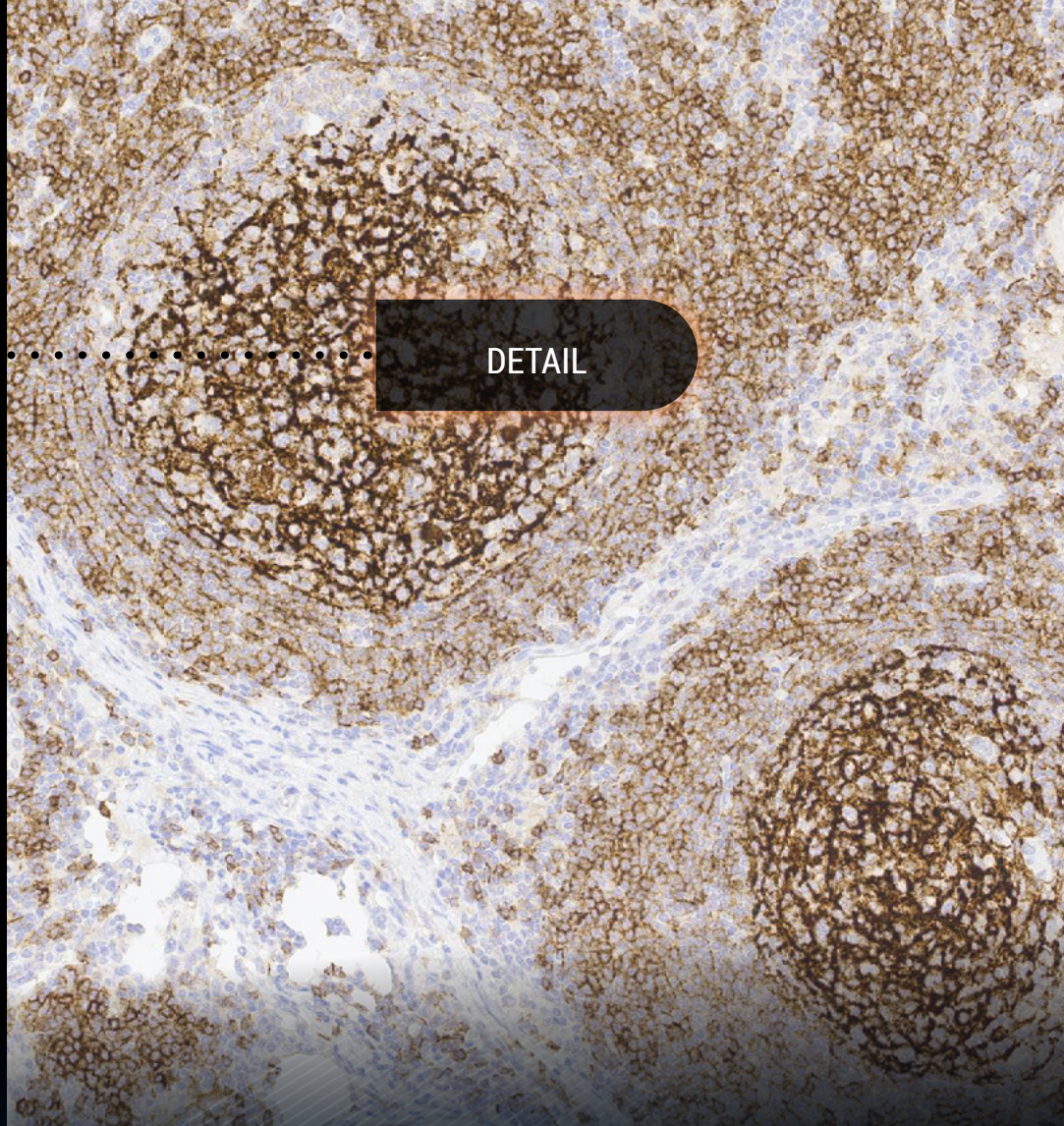


ACTIVE REAGENT CONTROL (ARC) MODULES

Consistent and reproducible staining with highly controlled dispense, reagent flow, and precise incubation to each and every slide.



CLARITY



DETAIL



SELF-CLEANING COVERTILE

The novel, semi-permanent ARC Covertile provides a sealed staining environment that protects tissue morphology, uses minimal reagents and provides total tissue care.



PREMIUM STAINING REAGENTS

Distinctive Novocastra advanced staining reagents and detection chemistry featuring Covertile technology achieve next-level staining.

SHORTEN THE TAT FROM RECEIPT TO DIAGNOSIS

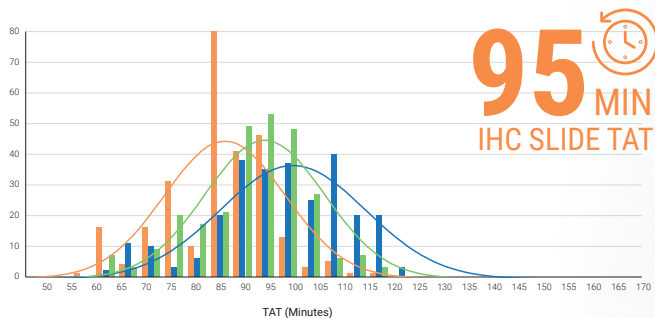
The BOND-PRIME staining platform has unprecedented speed, achieving the breakthrough milestone average IHC slide TAT of 95 min.

IHC testing is often the precursor to additional, more complex testing, so rapid results mean expedited diagnostic information to provide clarity to treatment.

ADVANCED ROBOTICS DELIVER SPEED WITH QUALITY

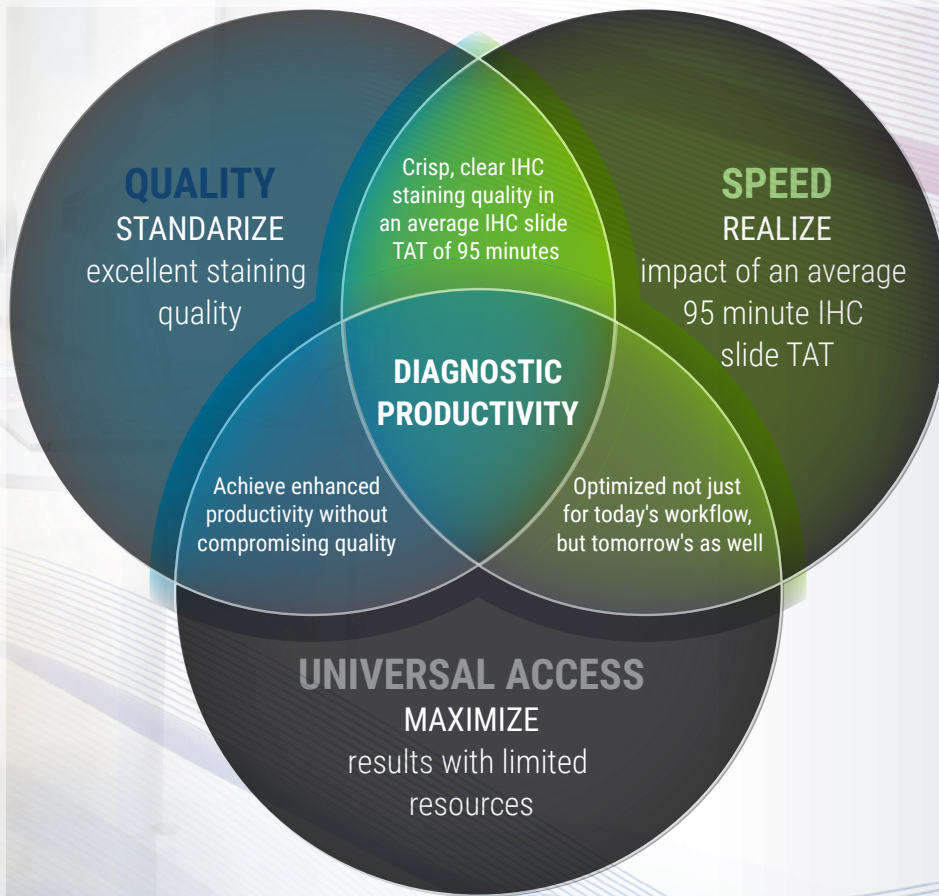
Next-generation robotics, optimized staining protocols with premium reagents and innovative Active Reagent Control (ARC) technology mean you don't have to compromise quality for speed.

With so much relying on this testing, getting to the diagnosis faster is paramount.





BOND-PRIME delivers an adaptable workflow, unprecedented speed, and excellent staining quality for enhanced diagnostic productivity



INVEST IN YOUR SUCCESS

Transcend Expectations for Your Return on Investment

The BOND-PRIME staining system doesn't just offer speed alone.

With resources at a premium, accomplish more with less because competing in today's diagnostic world requires quality diagnosis AND fast TAT.

By delivering cases to pathologists faster, with less operator intervention, BOND-PRIME is the solution that helps improve responsiveness while meeting tightening budgets.

DIAGNOSTIC PRODUCTIVITY

BOND-PRIME

IHC & ISH Staining System High-productivity through Speed, Quality, and Universal Access

BOND-PRIME SYSTEM SPECIFICATIONS

Dimensions	1217 mm (W) x 1400 mm (H) x 829 mm (D) 47.9 in (W) x 55.1 in (H) x 32.6 in (D)
Weight (dry)	384 kg (847 lb)
Slide capacity	72 (24 slides in Preload Drawer, 24 slides in ARC Array, 24 slides in Unload Drawer)
Reagent container capacity	7 mL and 30 mL
Number of reagent containers	70
Bulk reagent container capacity	1.25 L or 4.5 L for DI Water
Hazardous waste container capacity	4.5 L
External bulk waste container capacity	4.5 L
Operating voltage and Mains frequency	90 V to 264 V (for nominal voltage 100 V to 240 V)
Power Consumption	1260 VA
Sound pressure level output (at 1 m)	< 85 dBA maximum < 65 dBA normal operation

The BOND-PRIME has been proudly designed, created and manufactured in Australia.



57th Australian Export Awards
2019 NATIONAL WINNER

Winner
2018 VICTORIAN MANUFACTURING
Hall of Fame Awards

Learn more at: [LeicaBiosystems.com/BOND-PRIME](https://www.LeicaBiosystems.com/BOND-PRIME)

FOR IN VITRO DIAGNOSTIC USE

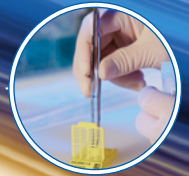
The BOND-PRIME IHC & ISH stainer from Leica Biosystems may not be available for use in your country. Please contact your Leica Biosystems representative for more information.

Copyright © 2023 Leica Biosystems, a division of Leica Microsystems Inc. All Rights Reserved. LEICA and the Leica logo are registered trademarks of Leica Microsystems IR GmbH. CEREBRO, Novocastra and BOND are trademarks of Leica Biosystems and its affiliates.

220100 Rev D • 12/2023

THE BOND ECOSYSTEM

HOLISTIC TRACKING



CEREBRO

Specimen Tracking & Workflow Management



BOND-MAX

Compact, Benchtop, Fully Automated IHC and ISH Staining System



BOND-III

High-Throughput, Fully Automated IHC and ISH Staining System



BOND-PRIME

Fully Automated and Adaptable, High-speed IHC and ISH Staining System

WORKFLOW SOLUTIONS



BOND-ADVANCE NETWORK

BOND LIS

CONSUMABLES



READY-TO-USE REAGENTS



PLUG AND PLAY CONSUMABLES



DILUENTS, ANCILLARIES, AND RETRIEVAL SOLUTIONS



NOVOCASTRA ANTIBODIES WITH 14 PATHOLOGY MENUS



Leica
BIOSYSTEMS